

ARCHITECTURAL SERIES

An infrared radiant heater that has functional longevity in any climate.

Whether you need to heat a small or large inner courtyard, or a street frontage in variable conditions, Heating Outdoors can supply our Architectural Series electric radiant outdoor heaters in the perfect size to provide heating coverage to any public dining, recreation or residential area.

Our Architectural Series of electric outdoor heaters are manufactured using Australian Marine Grade 316 Stainless Steel. This means they provide outstanding environmental resilience and functional longevity in any climate.

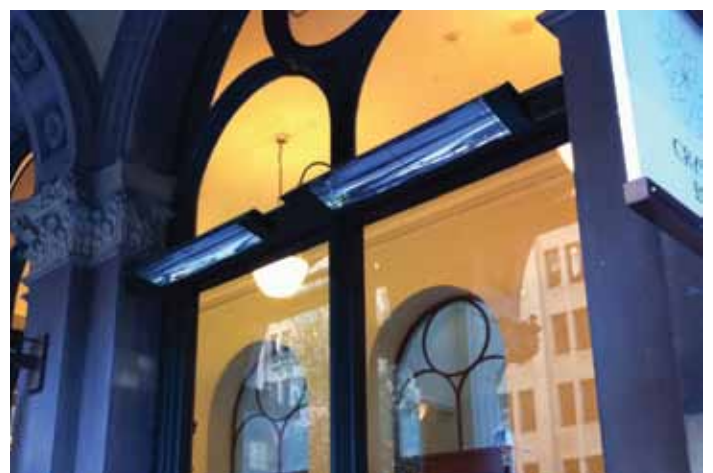
There are five sizes in the Architectural Series of outdoor heaters, providing thermal coverage of up to 16 square metres.

NEW

Made from
Marine Grade
316 Stainless Steel

NEW

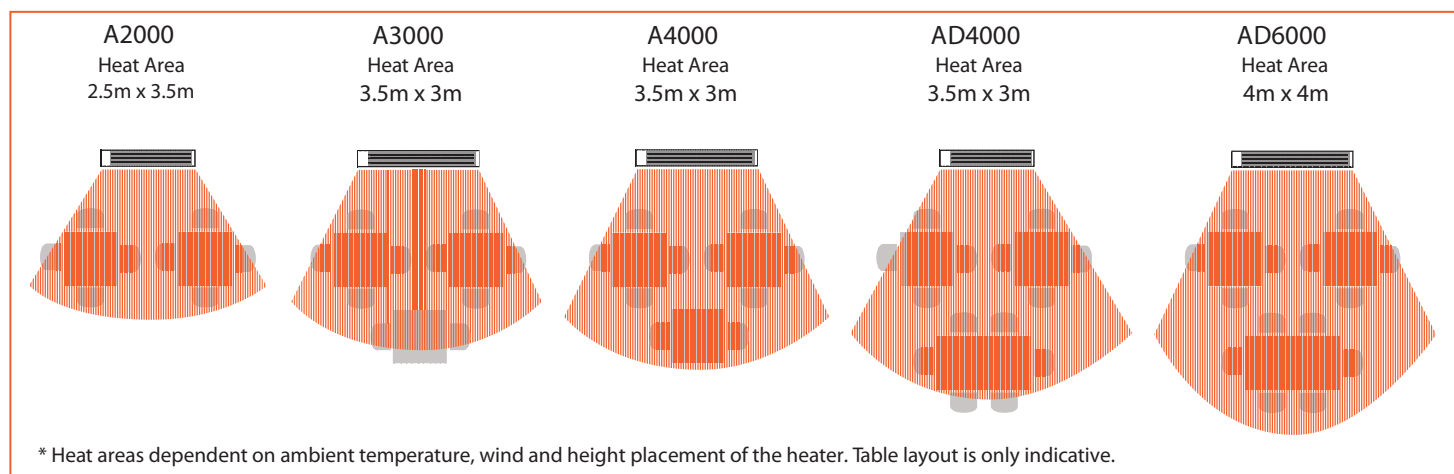
2ND Generation
Directional Quartz Element



ARCHITECTURAL SERIES



Heat Area:



Specifications:

Model	A2000	A3000	A4000	AD4000	AD6000
Dimensions (Width)	1.08m	1.65m	1.65m	1.08m	1.65m
Power (Watts)	2000	3000	4000	4000	6000
Power Connection (Amps)	10	12.5	17	20	25
Heat Area	2.5m x 3.5m	3.5m x 3m	3.5m x 3m	3.5m x 3m	4m x 4m
Elements	Single	Single	Single	Double	Double
Finish	Marine Grade 316 Stainless Steel				

